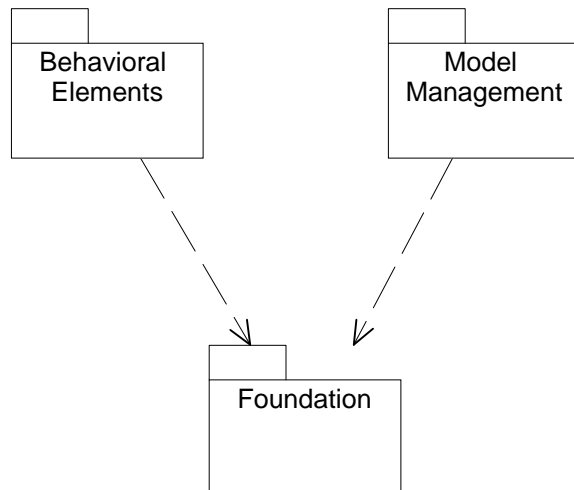


UML Metamodel version 1.1 1 September 1997

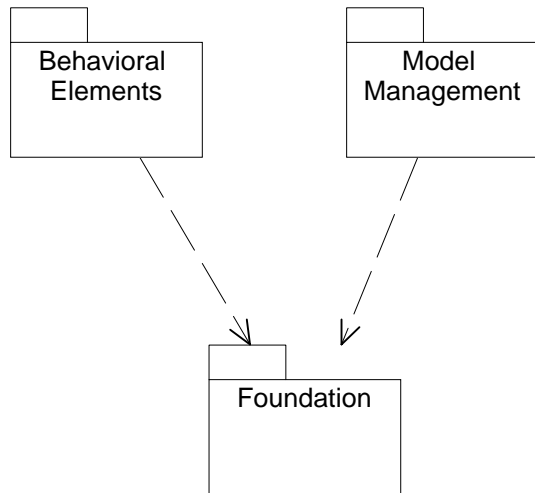
This is the metamodel of the Unified Modeling Language (UML). It describes the constituents of all well-formed models that may be represented in the UML, using the UML itself. See <http://www.rational.com/uml> for updates.

The metamodel is organized according to the following packages:

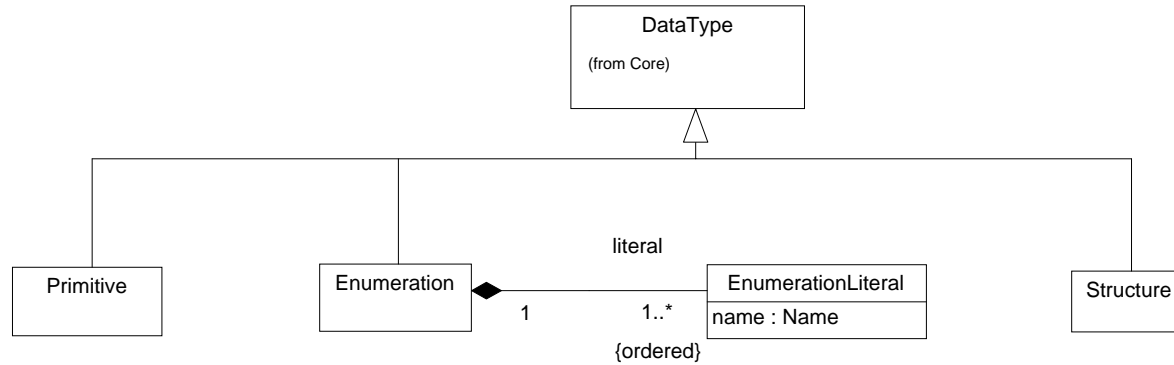
- Foundation
 - Core
 - Auxiliary Elements
 - Extension Mechanisms
 - Data Types
- Behavioral Elements
 - Common Behavior
 - Collaborations
 - Use Cases
 - State Machines
- Model Management



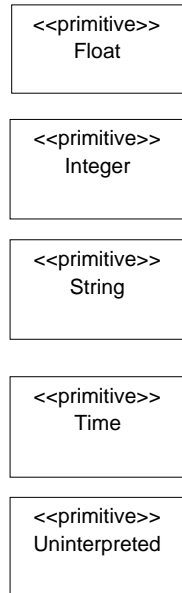
Top-Level Packages



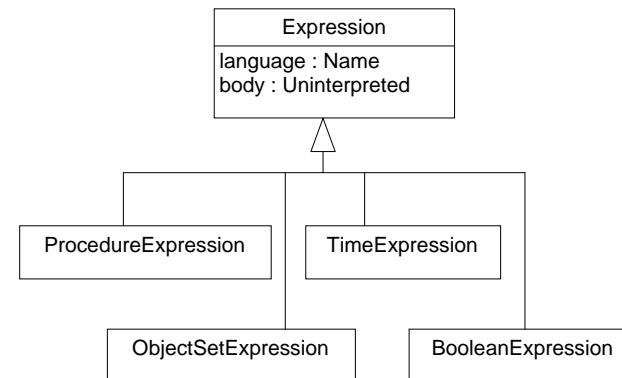
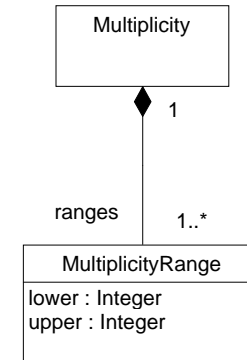
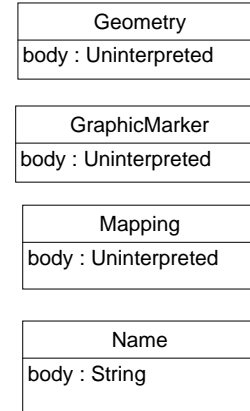
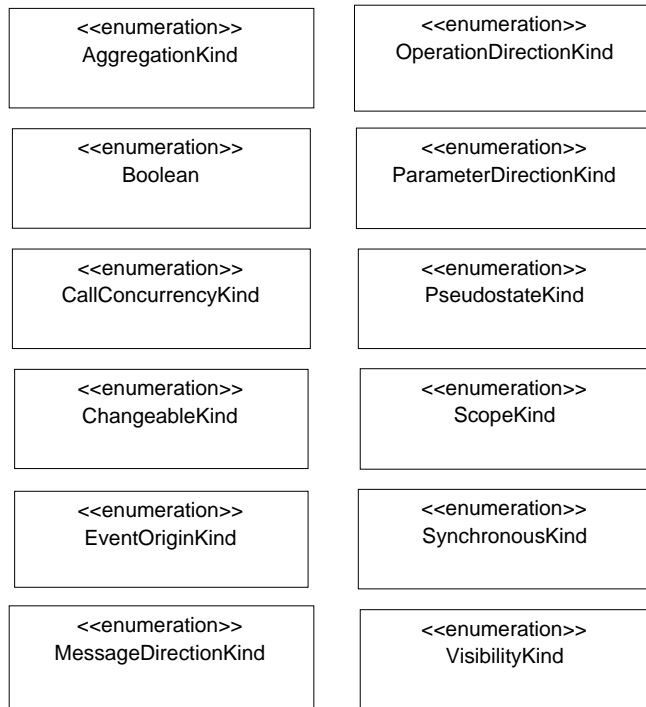
DataTypes



Primitives



Enumerations



Standard Elements

Stereotypes, tagged values, and constraints are the mechanisms of extensibility in the UML. Stereotypes extend the classes in the metamodel, tagged values extend the attributes of classes in the metamodel, and constraints extend the semantics of the metamodel. Certain stereotypes, tagged values, and constraints are predefined in the UML; others may be user defined.

Standard stereotypes

becomes
bind
callDependency
constraint
classify
copy
create
declassify
delete
derived
document
enter state
enumeration
exit state
extends
facade
file
framework
friend
implementation class
import
inherits
instance
invariant
library
metaclass
postcondition
powertype
precondition
process
requirement
role
self
send
stereotype
stub
subclass
subtype
system
table
thread
top-level package
type
uses
utility

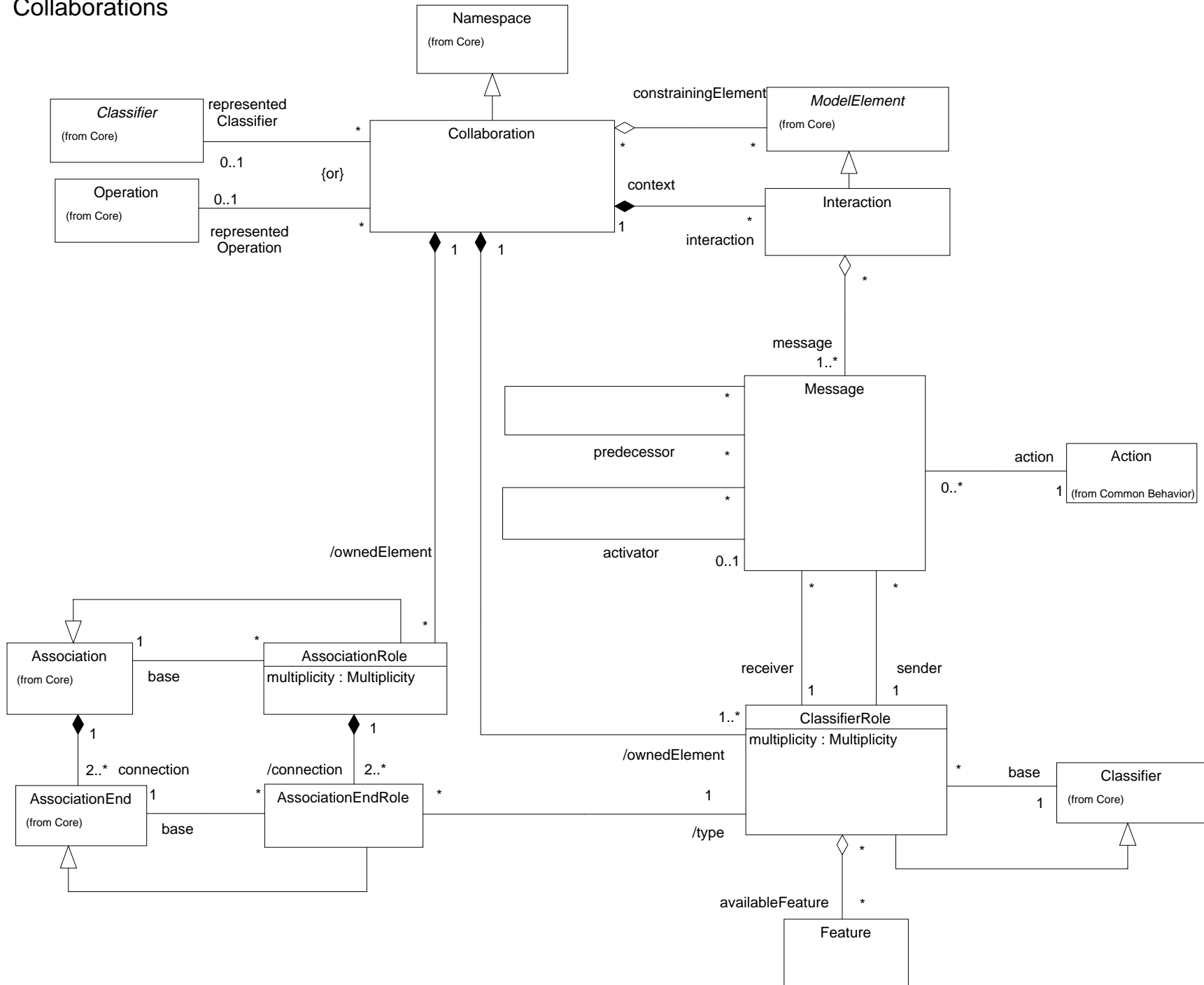
Standard tagged values

documentation
location
persistence
responsibility
semantics

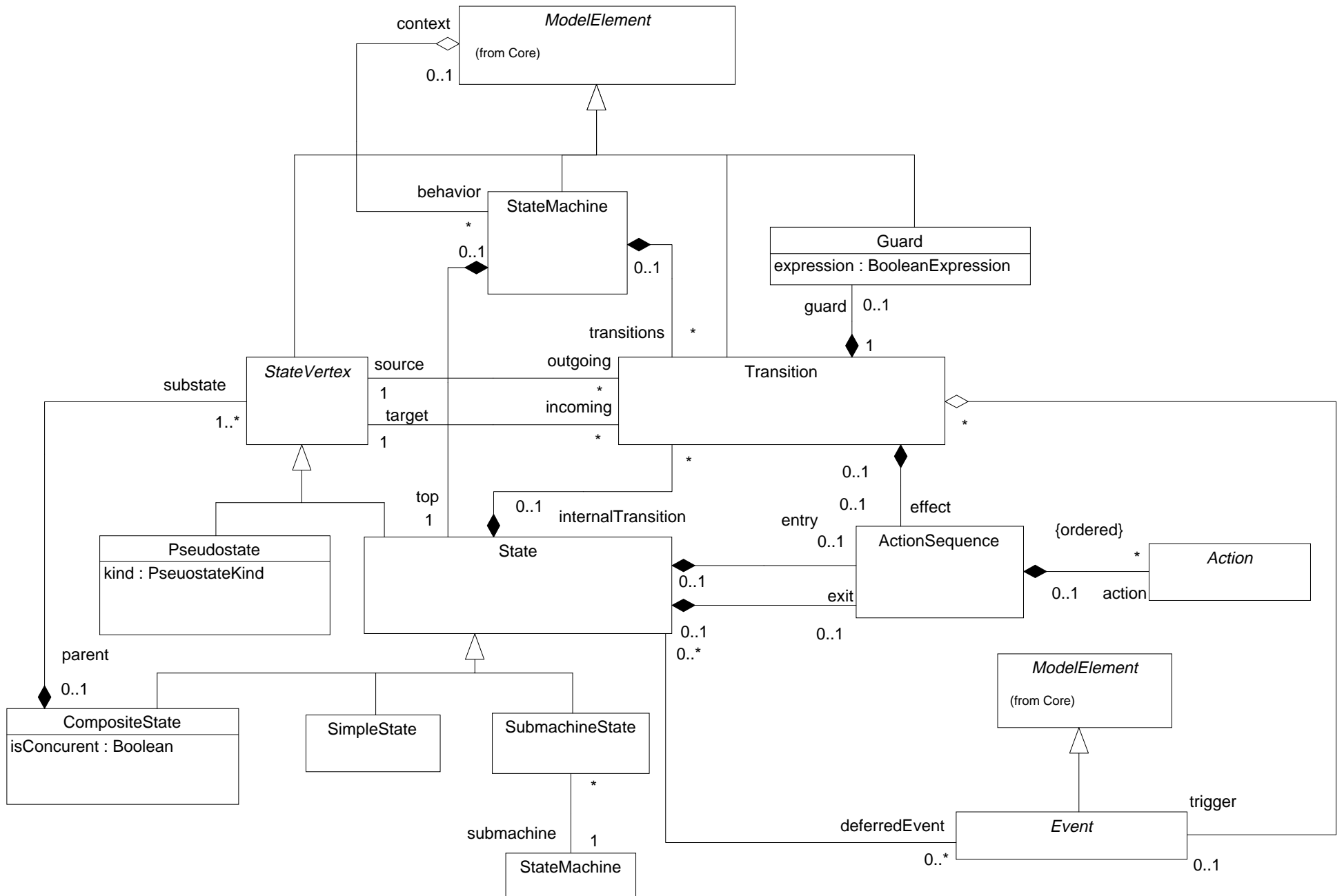
Standard constraints

association
broadcast
complete
disjoint
global
implicit
incomplete
local
or
overlapping
parameter
vote

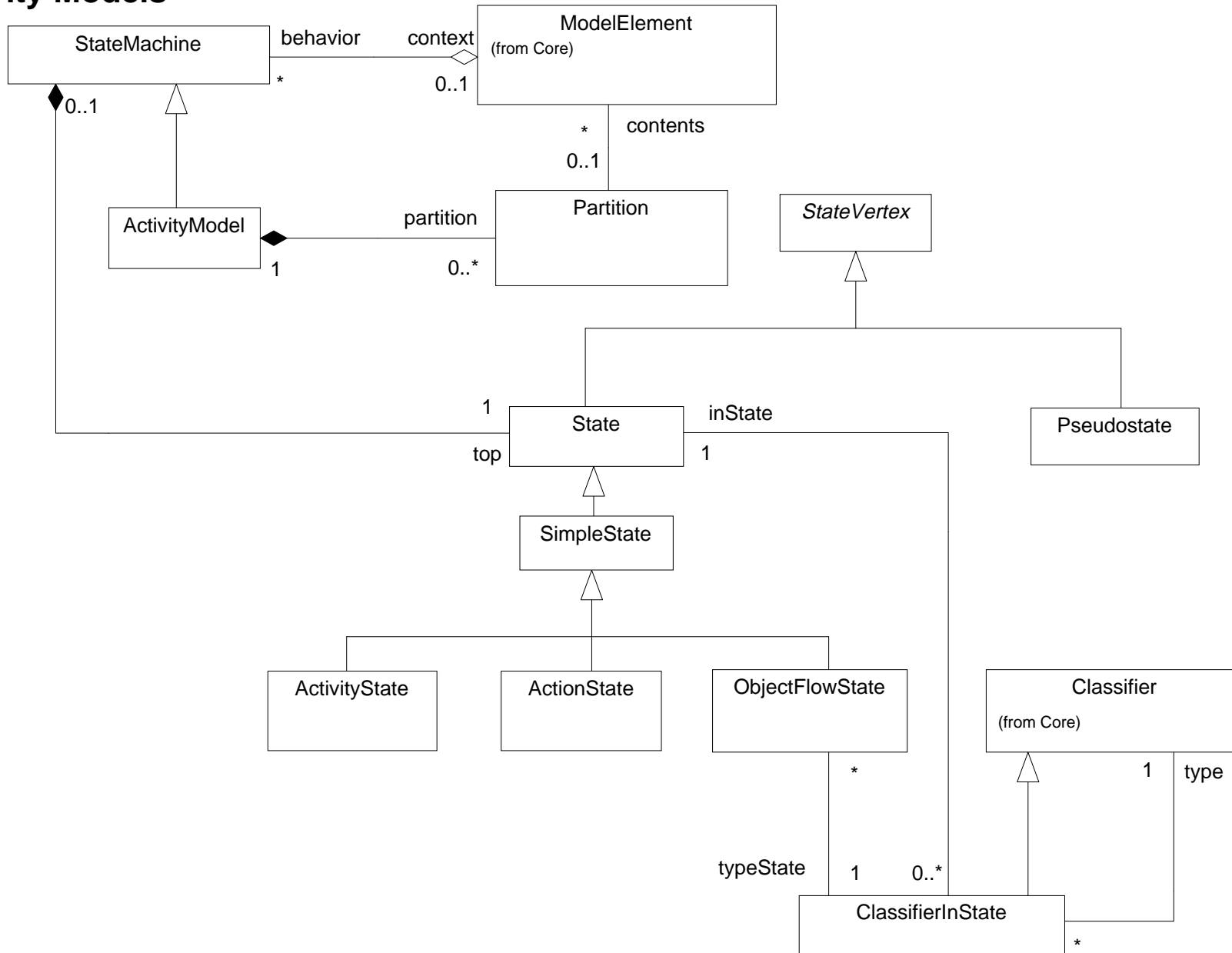
Collaborations



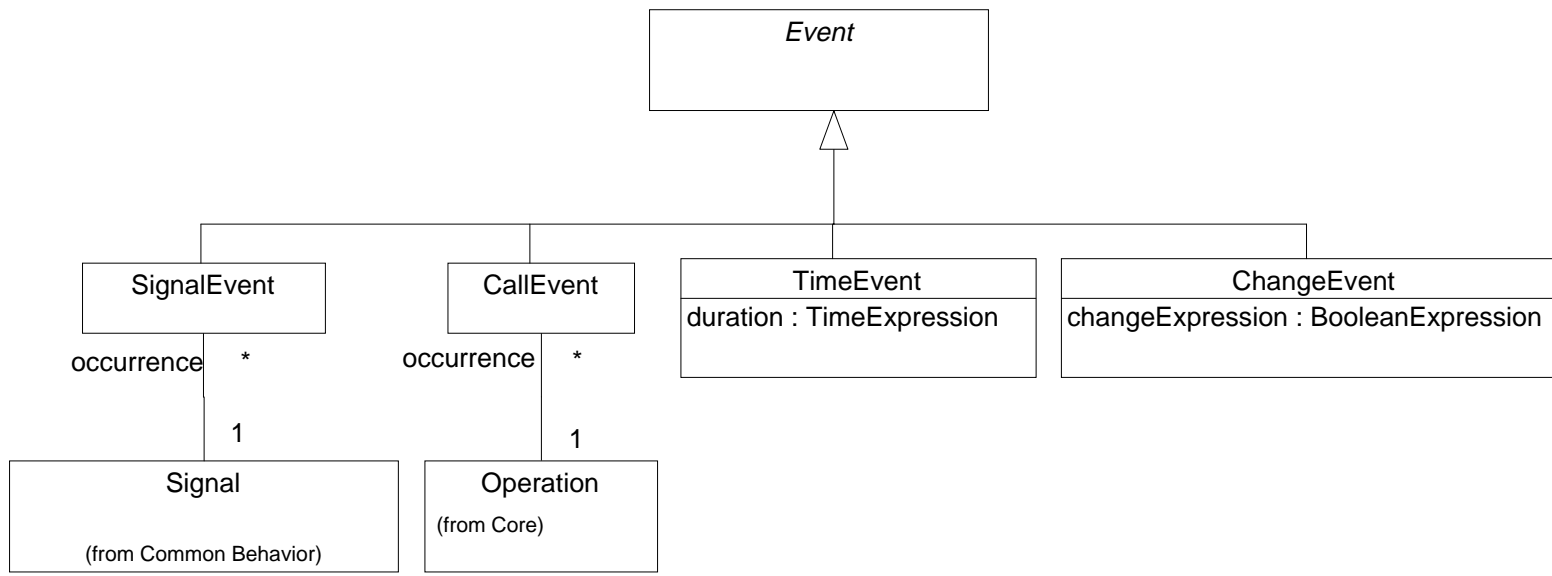
State Machines: Main



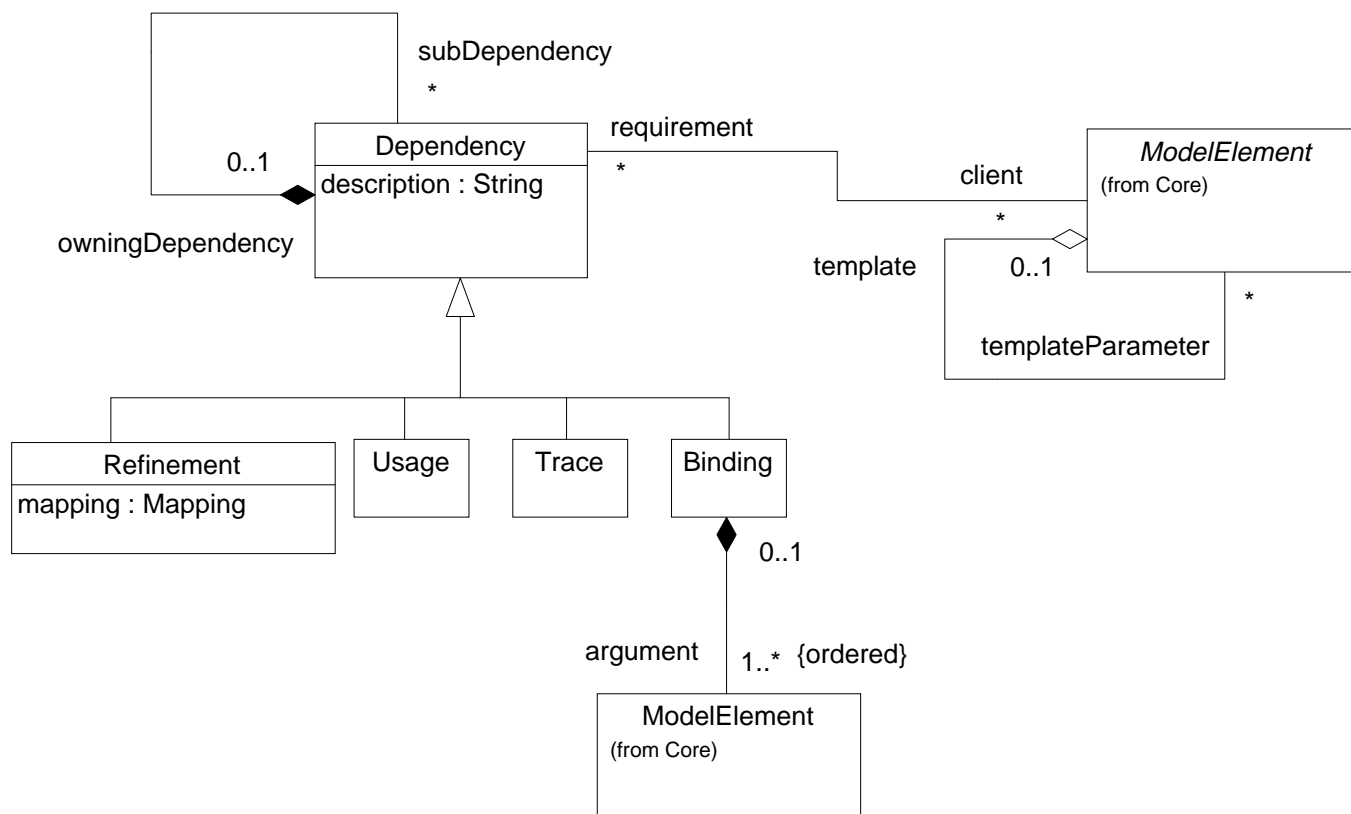
State Machines: Activity Models



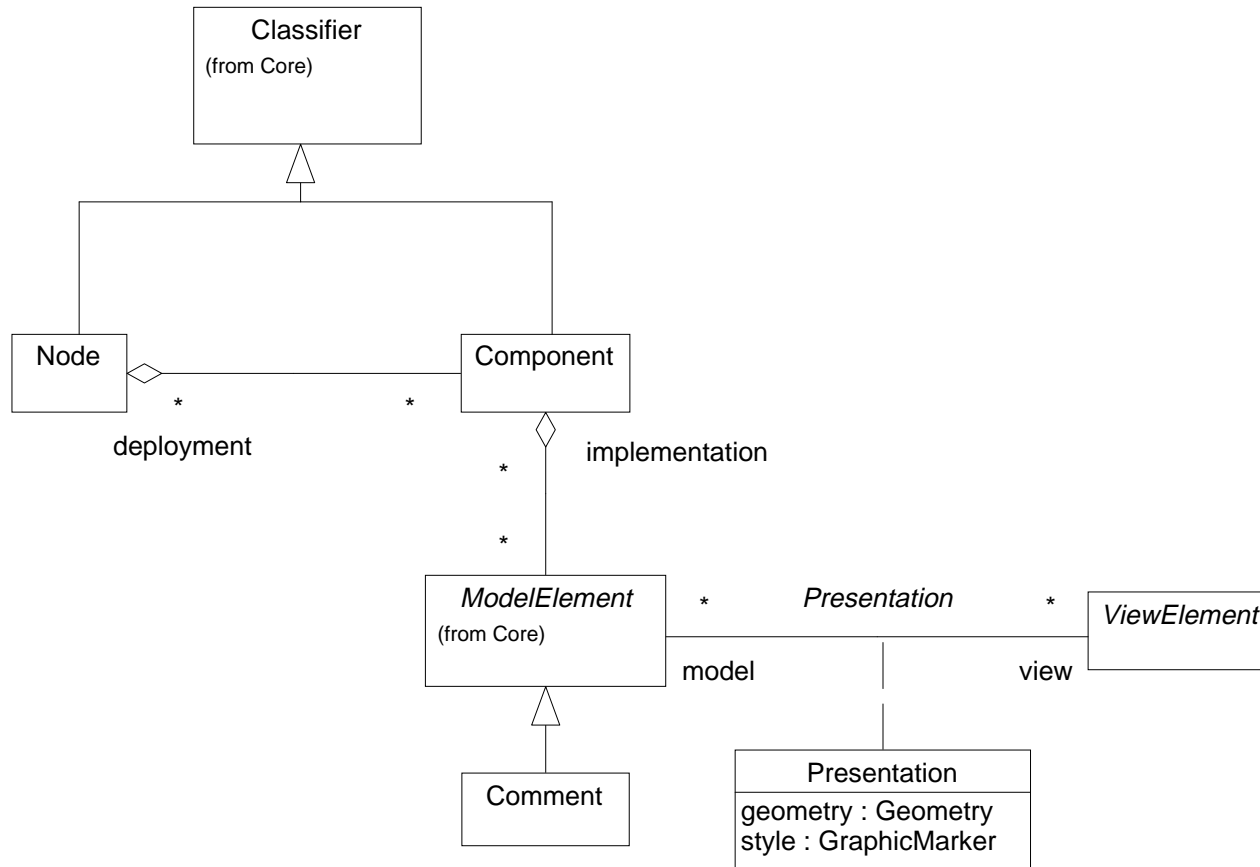
State Machines: Events



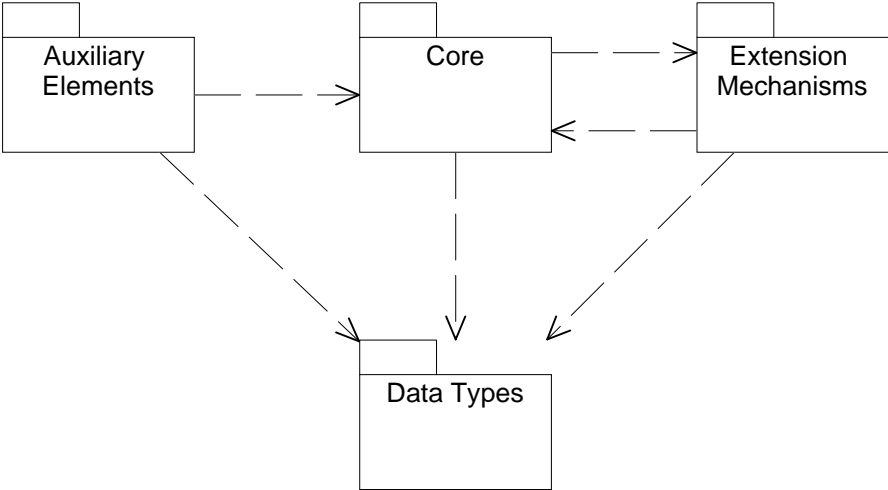
Auxiliary Elements: Dependencies



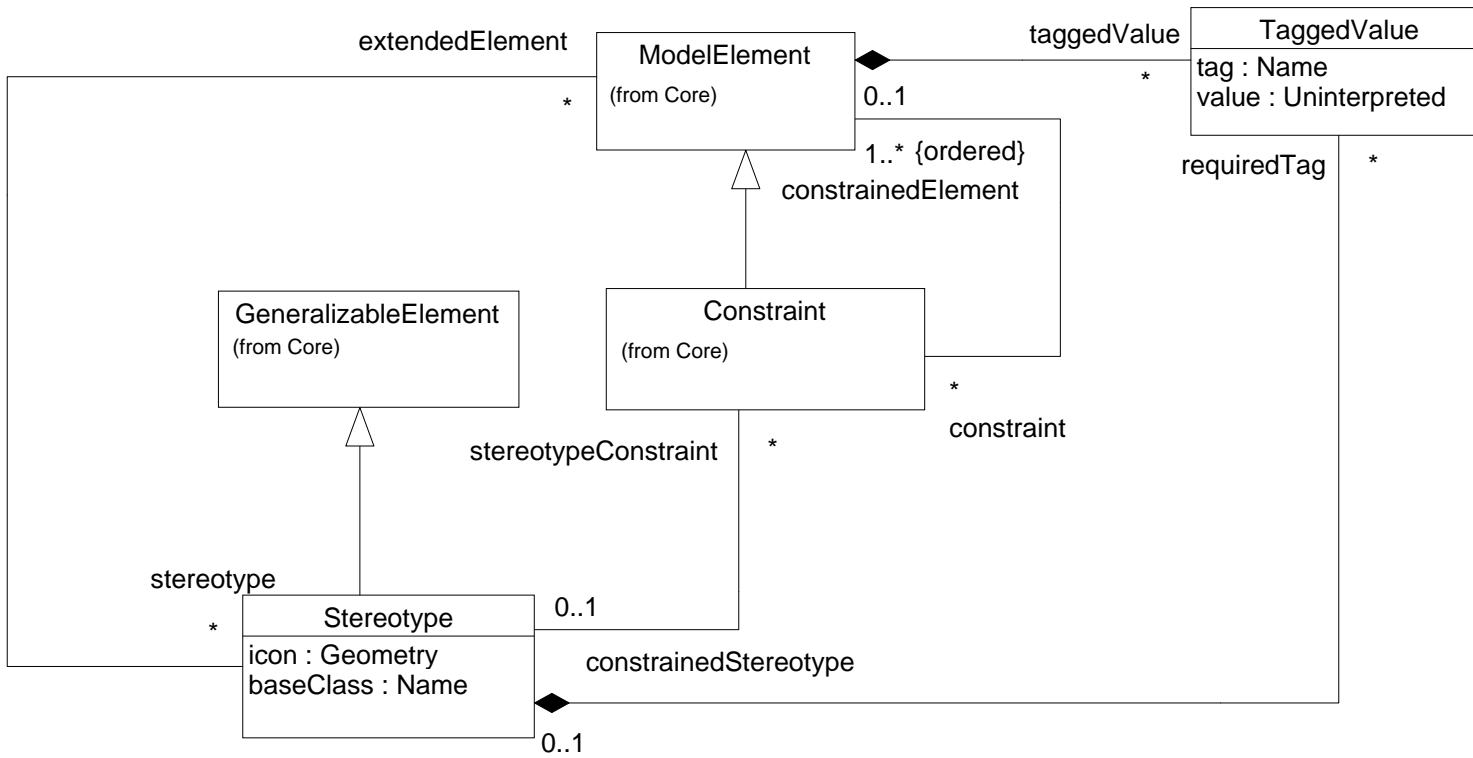
Auxiliary Elements: Physical Structures and View Elements



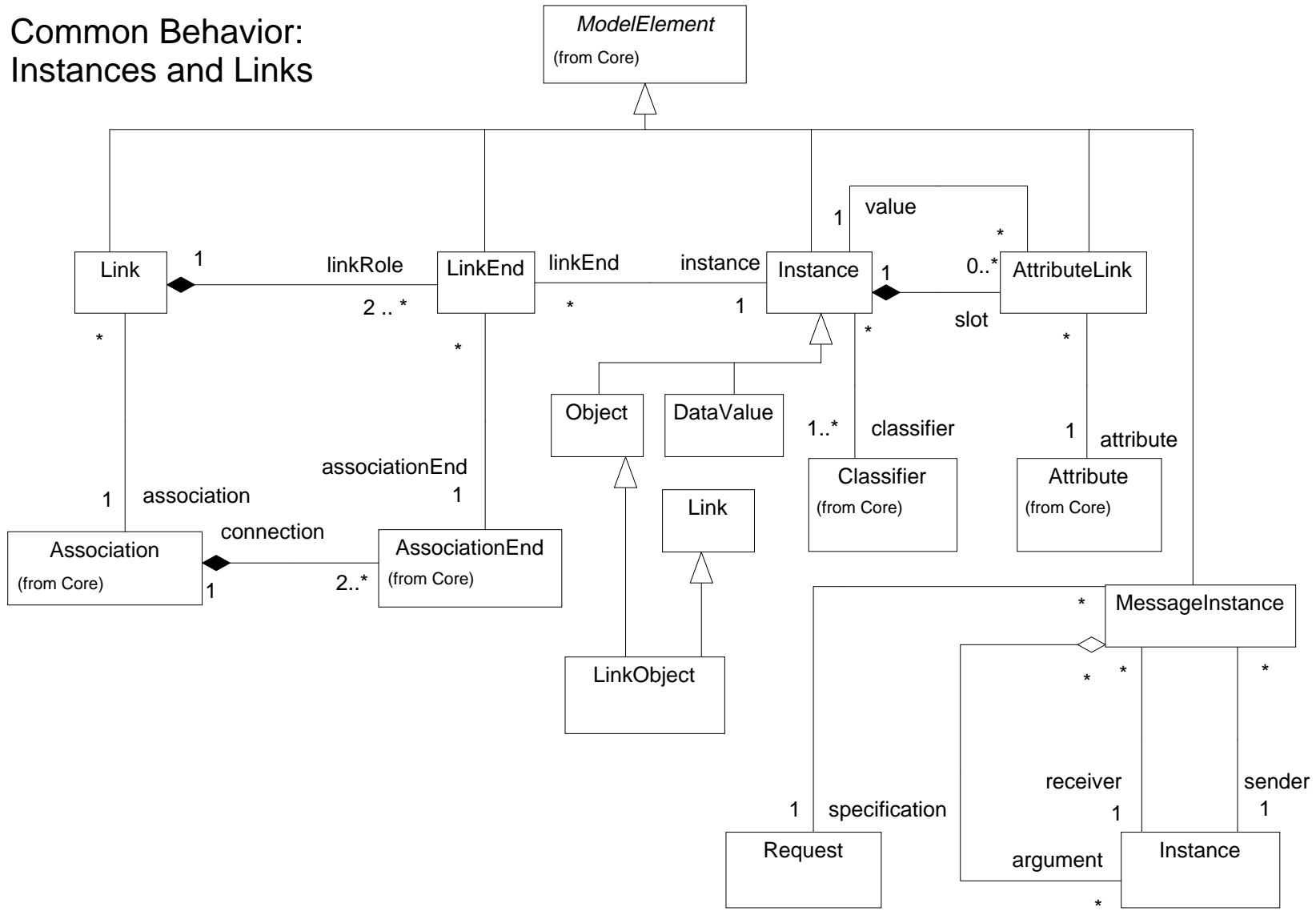
Foundation Packages



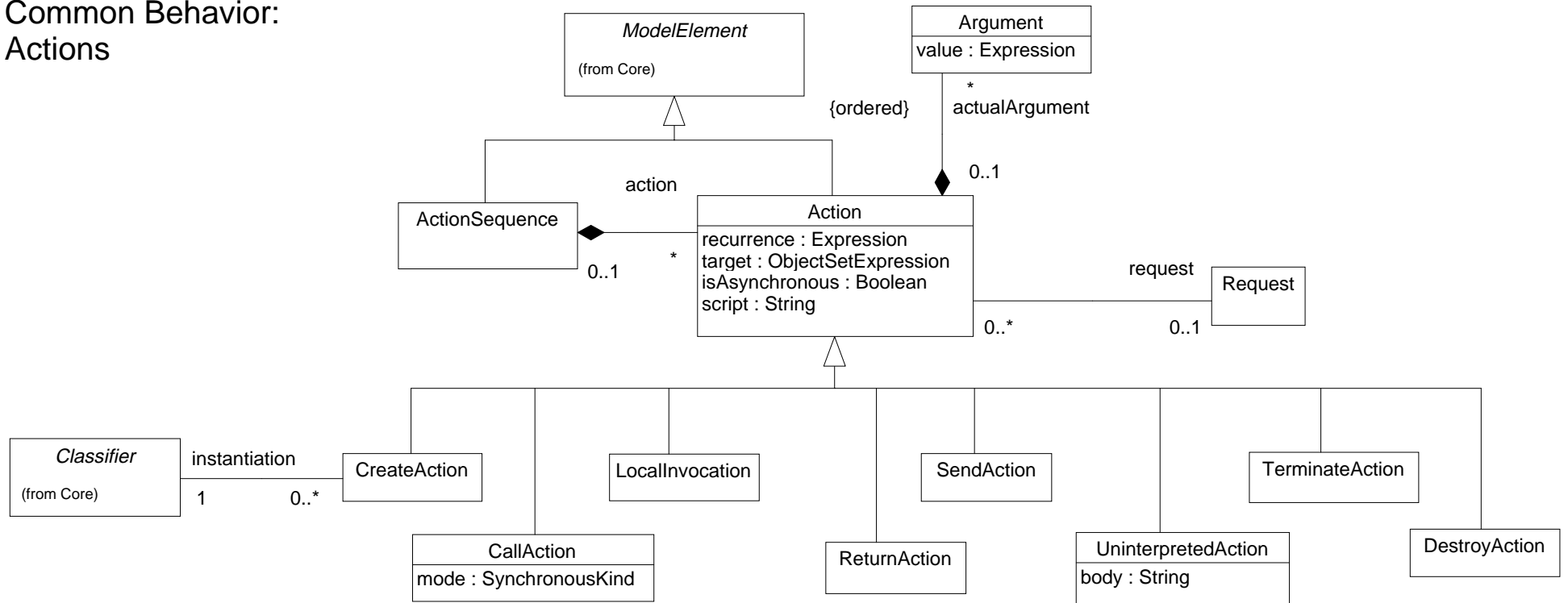
Extension Mechanisms



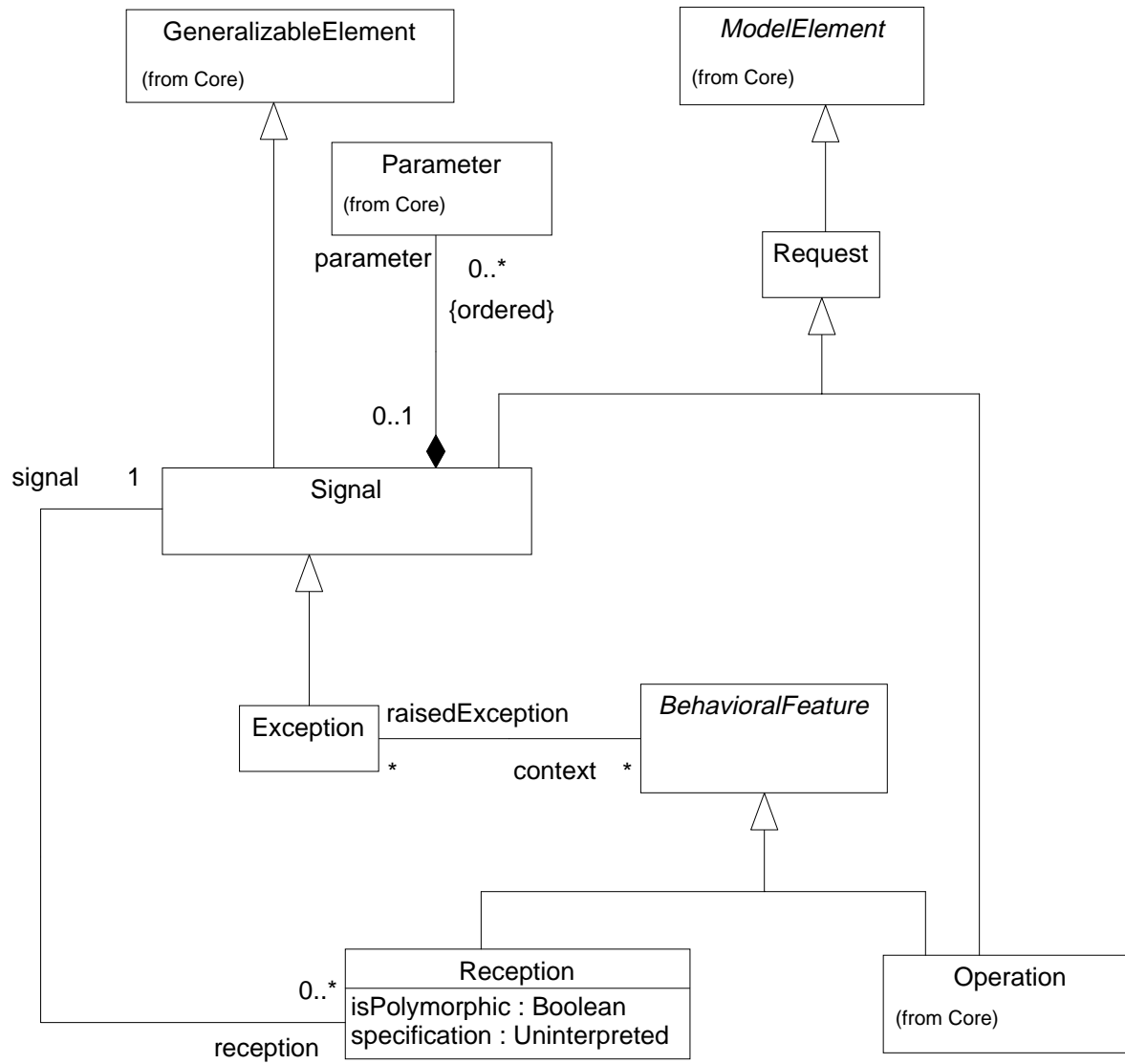
Common Behavior: Instances and Links



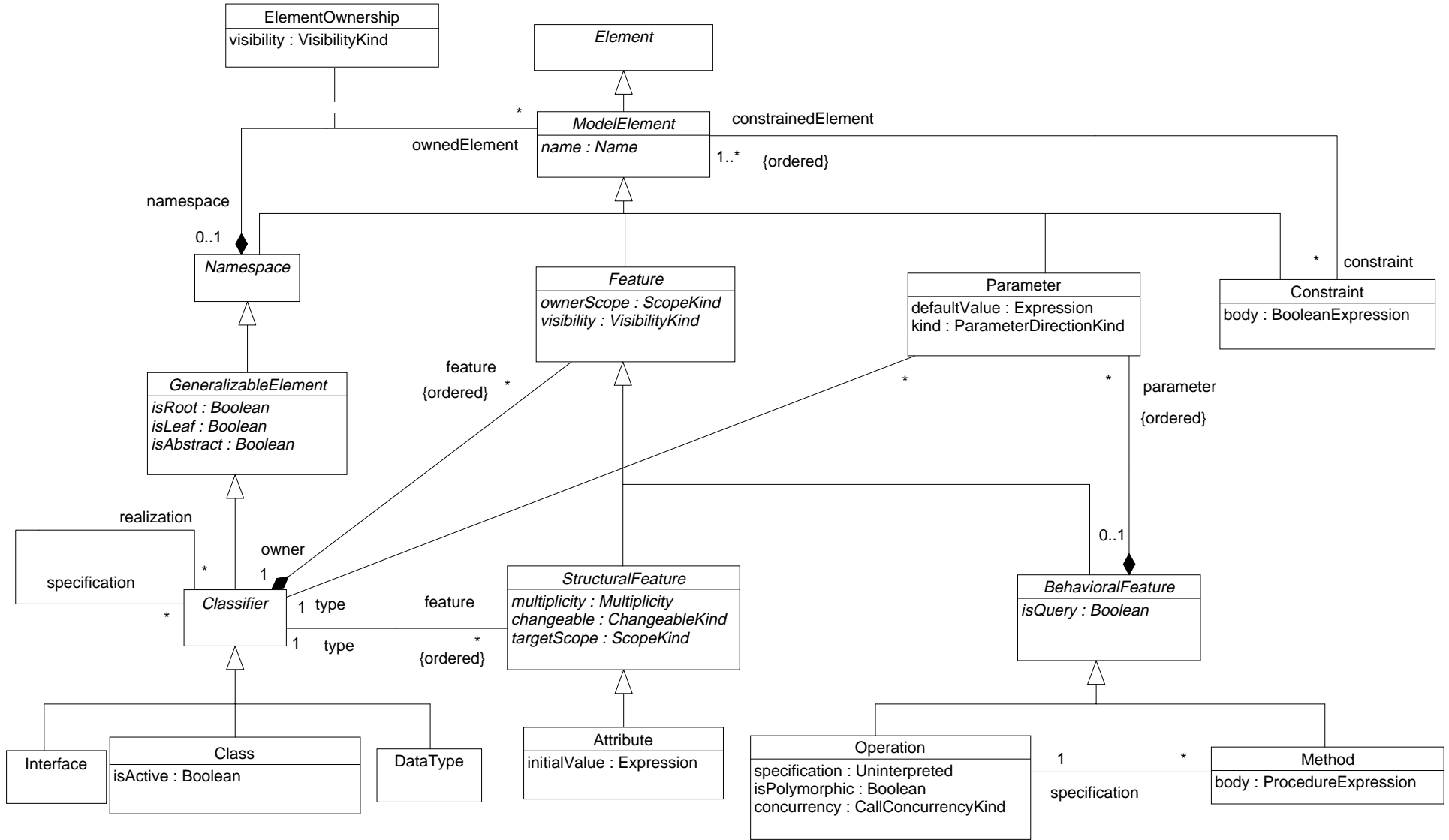
Common Behavior: Actions



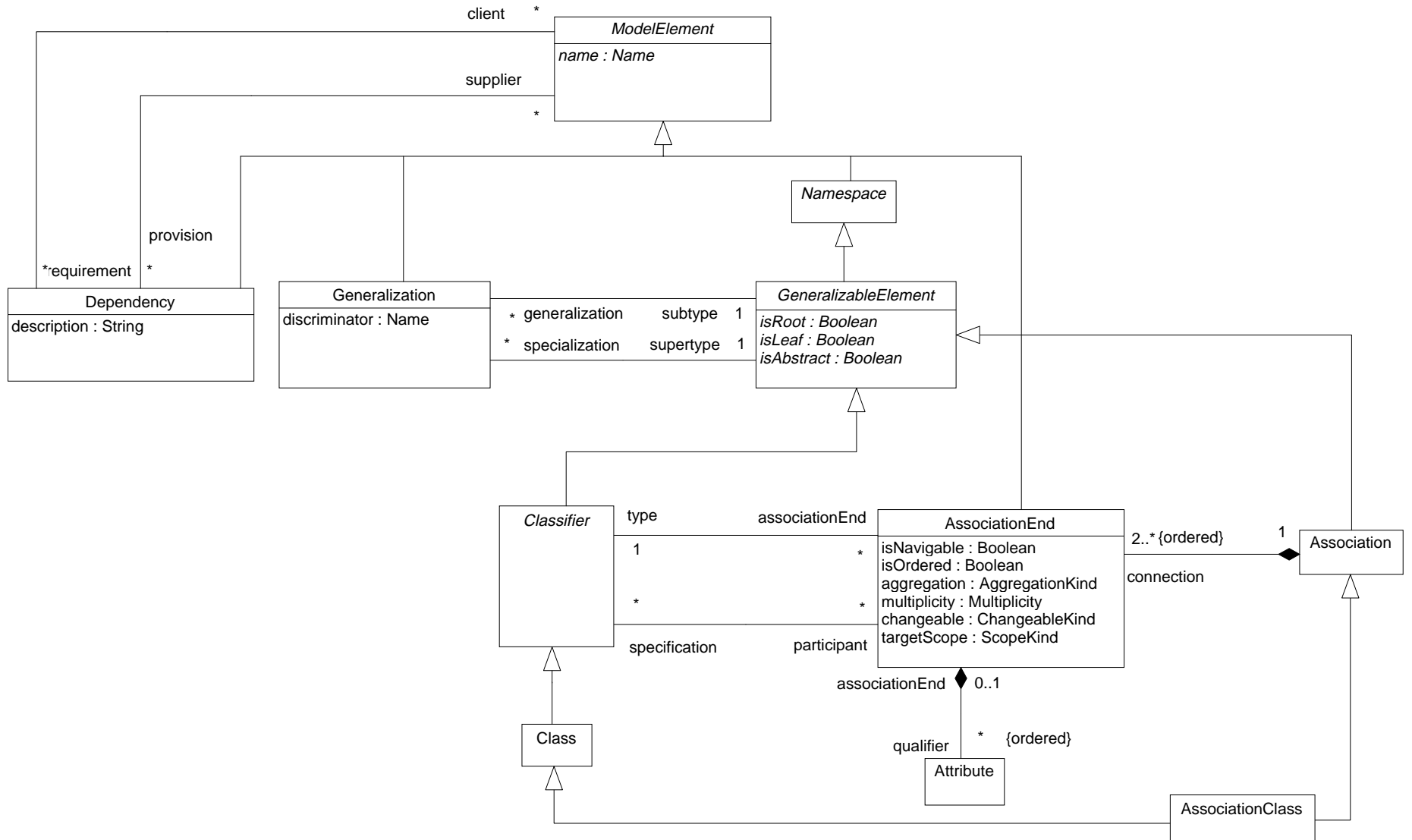
Common Behavior: Requests



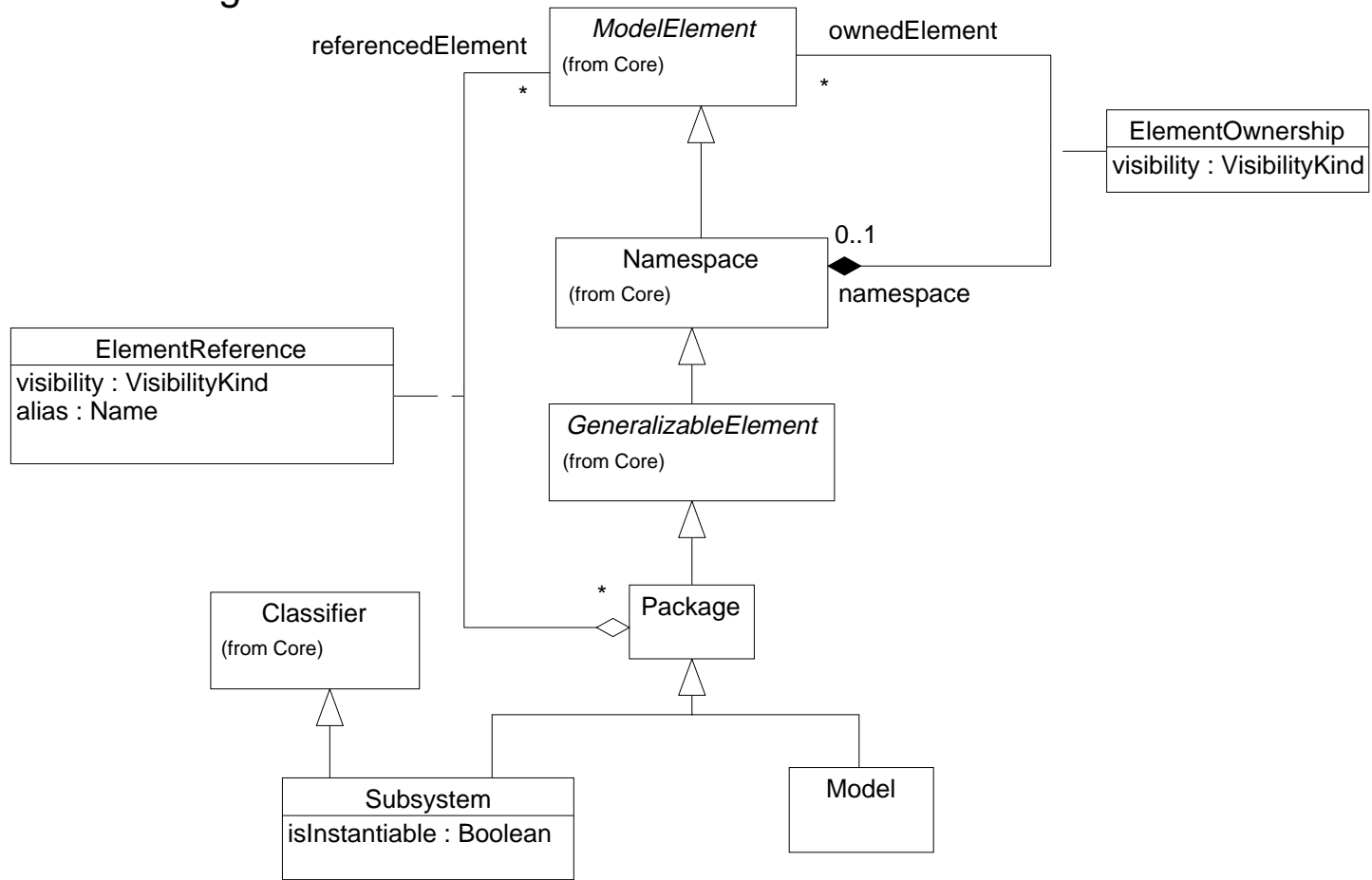
Core: Backbone



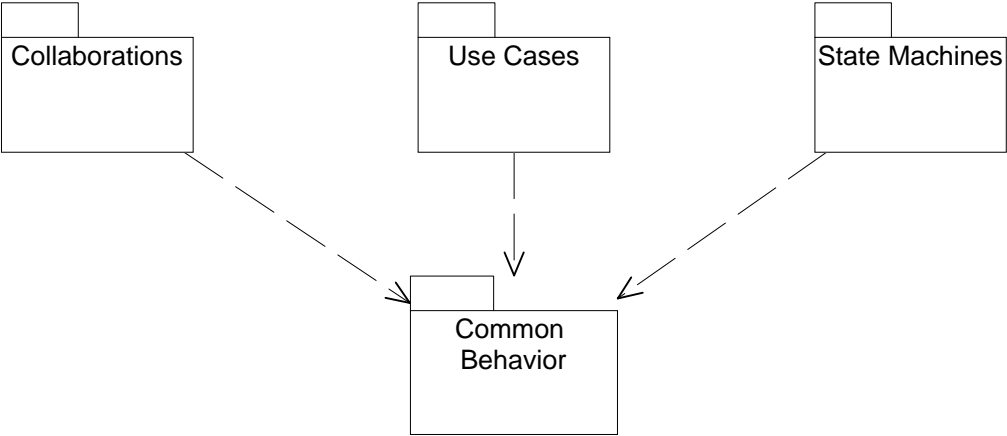
Core: Relationships



Model Management



Behavioral Elements Packages



Use Cases

