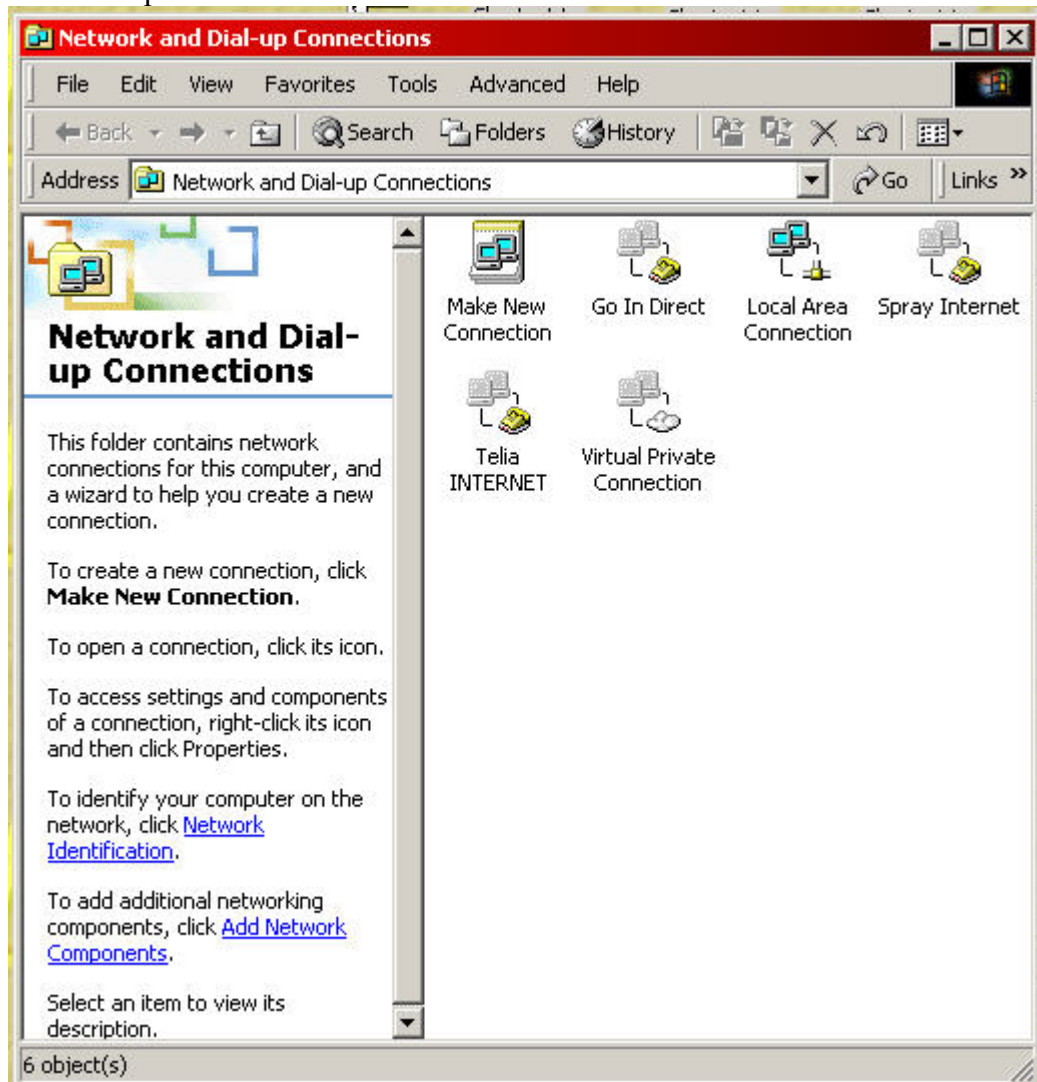
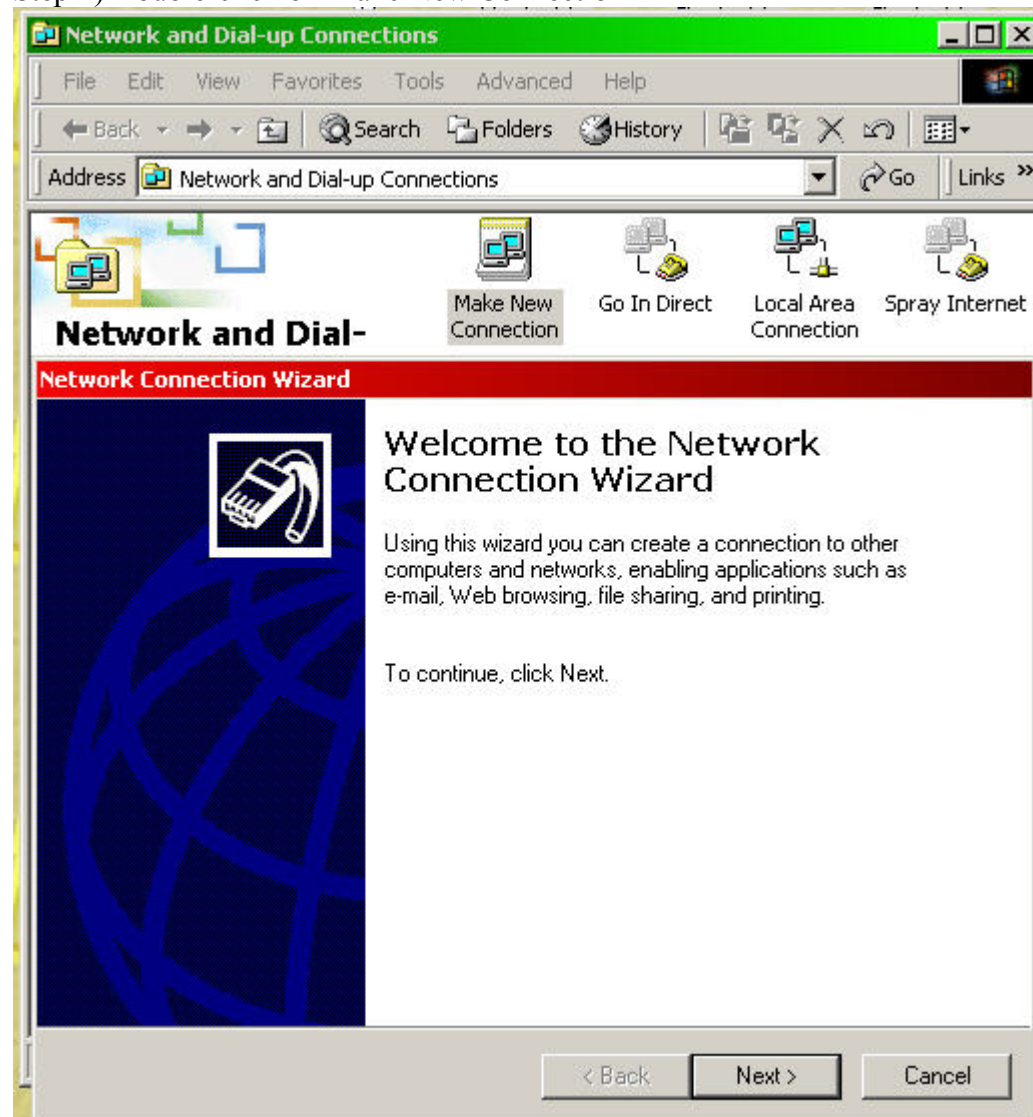


Win 2000 PPTP to Linux server

Step 1) Press Start -> Programs -> Accessories -> Communications -> Select Network and Dial-up Connections



Step 2) Double-click on Make New Connection



Step 3) Click on Next, select Connect to a private network through the Internet and click Next

Network Connection Wizard

Network Connection Type
You can choose the type of network connection you want to create, based on your network configuration and your networking needs.

- Dial-up to private network**
Connect using my phone line (modem or ISDN).
- Dial-up to the Internet**
Connect to the Internet using my phone line (modem or ISDN).
- Connect to a private network through the Internet**
Create a Virtual Private Network (VPN) connection or 'tunnel' through the Internet.
- Accept incoming connections**
Let other computers connect to mine by phone line, the Internet, or direct cable.
- Connect directly to another computer**
Connect using my serial, parallel, or infrared port.

< Back Next > Cancel

Step 4) Automatically dial this initial connection and Select Virtual Private Connection then click Next

Network Connection Wizard

Public Network
Windows can make sure the public network is connected first.

Windows can automatically dial the initial connection to the Internet or other public network, before establishing the virtual connection.

- Do not dial the initial connection.
- Automatically dial this initial connection:
Virtual Private Connection

< Back Next > Cancel

Step 5) Enter the pptp server IP or hostname. Then click Next

Network Connection Wizard

Destination Address
What is the name or address of the destination?

Type the host name or IP address of the computer or network to which you are connecting.

Host name or IP address (such as microsoft.com or 123.45.6.78):

ns.ing-steen.se

< Back Next > Cancel

Step 6) Don't use smartcard, click Next

Network Connection Wizard

Smart Cards
You can use your smart card with this connection.

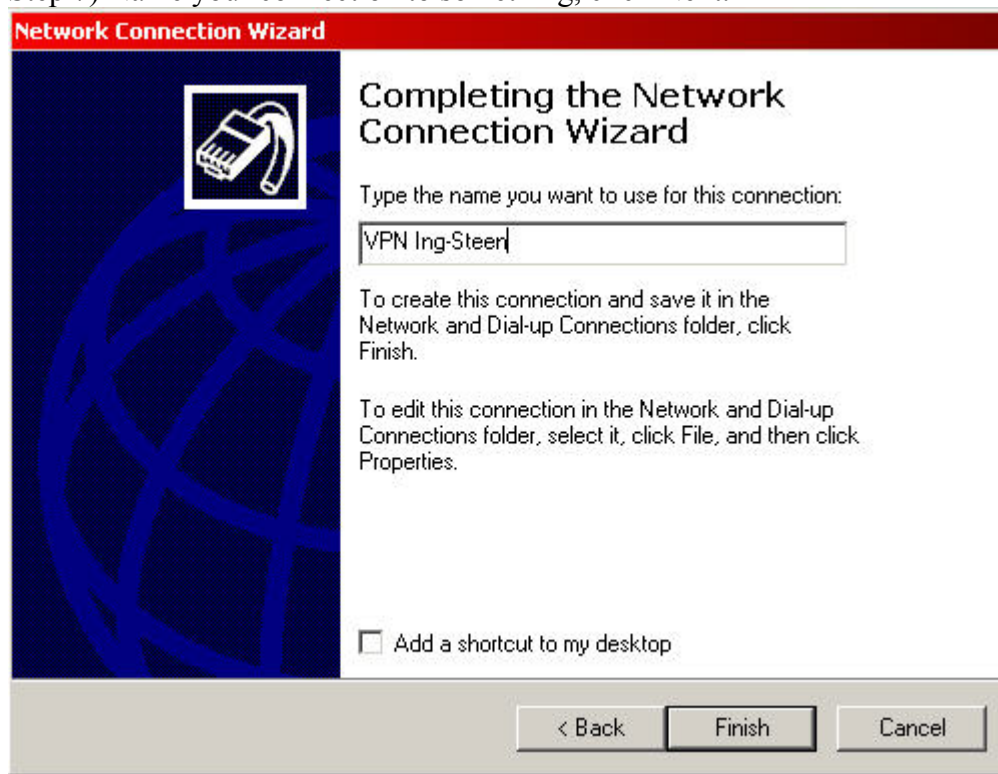
You can configure this connection to use your smart card to log you into the remote network. Select whether to use your smart card with this connection.

Use my smart card

Do not use my smart card

< Back Next > Cancel

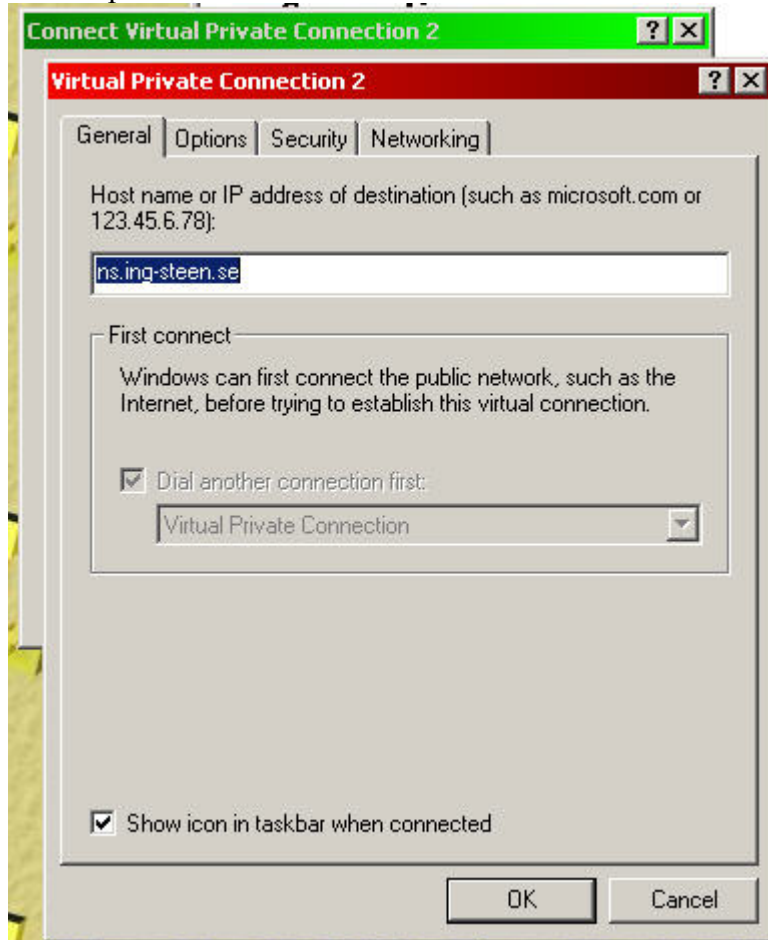
Step 7) Name your connection to something, click Next.



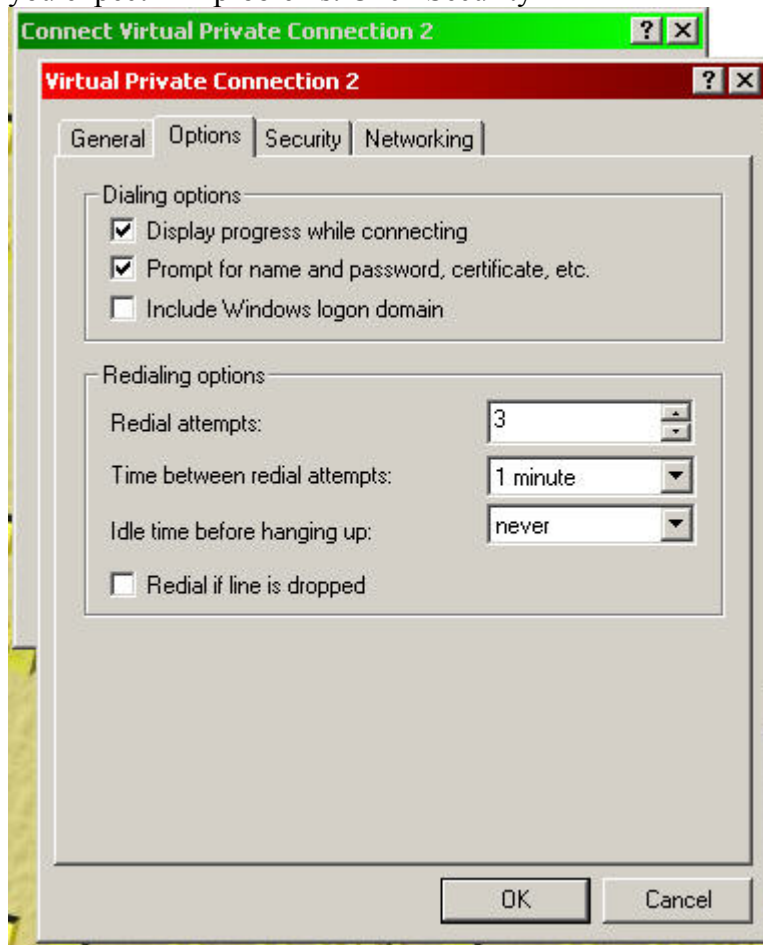
Step 8) After Step 7, you will have the basic PPTP to the selected pptp server. It is time to click Properties.



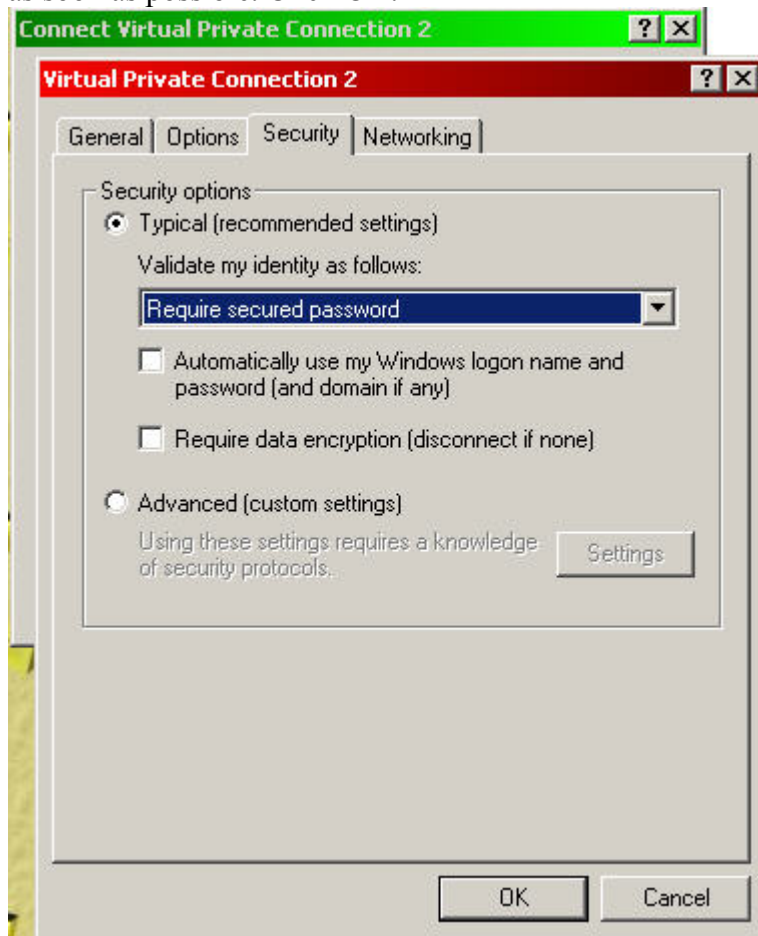
Step 9) At properties make sure that Host IP or hostname of the PPTP server is there.
Click Options



Step 10) This is how options can look like, please mark Redial if the line is dropped if you expect link problems. Click Security



Step 11) This is the simplest setup, advanced users might use advanced settings. Observe that for the moment we don't support data encryption, that will be included as soon as possible. Click OK.



Step 12) Now your PPF settings is done, you now have to test the connection, That is done by next step by entering your password and click OK. It takes up to one minute until you are verified and connected to the server.

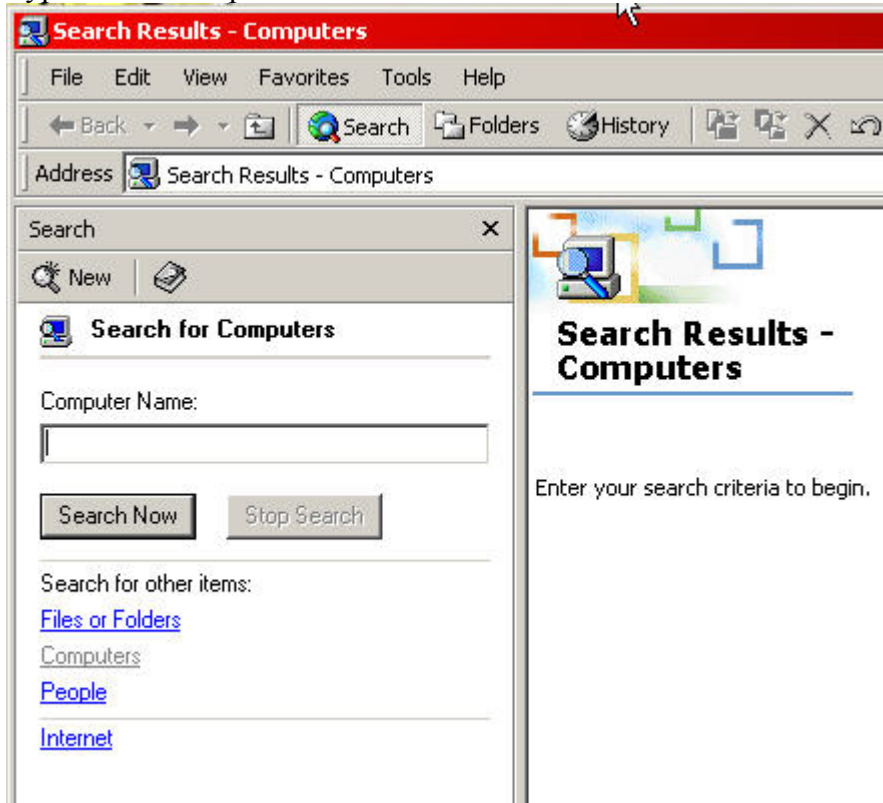
You will later find your connections icon like this, in our case it was called VPN-Ing-steen. Just double click on the icon and you for make connection.



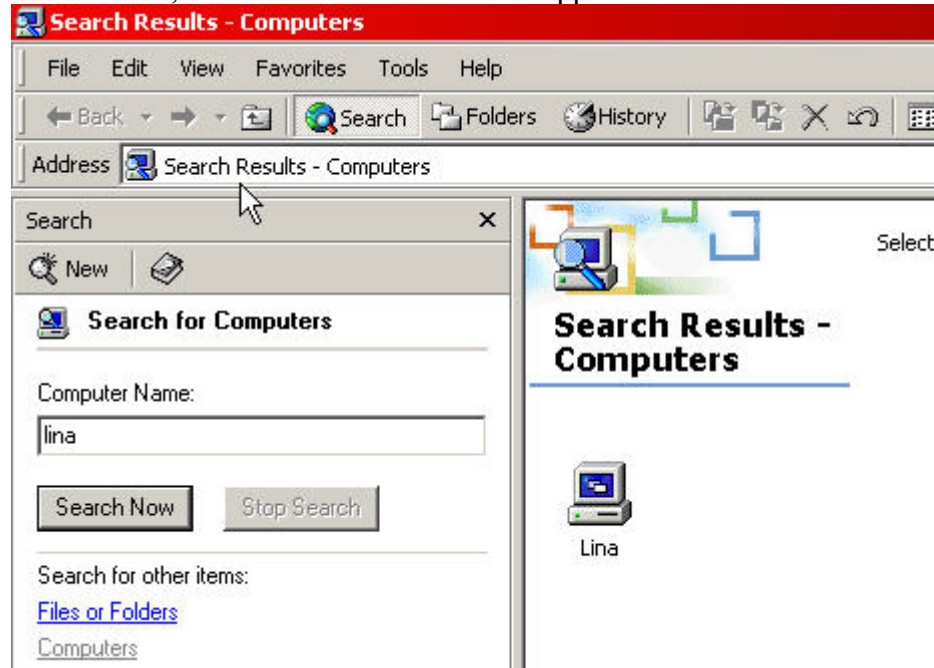
To Notice, this is a tunnel that are built up through the internet. It is possible to share this tunnel with other computers in Windows ME and Windows 2000. Your computer will receive an IP address from the pptp server on the other end. This makes your computer partly belong to the intranet of Ing-Steen, you will land in the DMZ -2 area, behind two firewalls to internet and one firewall from the local computers in the intranet. You will have full access to your “home”, “public_html” catalogue and other catalogues as well. Due to the nature of this kind of tunnels you will have to right click on “My Network Places” and select search



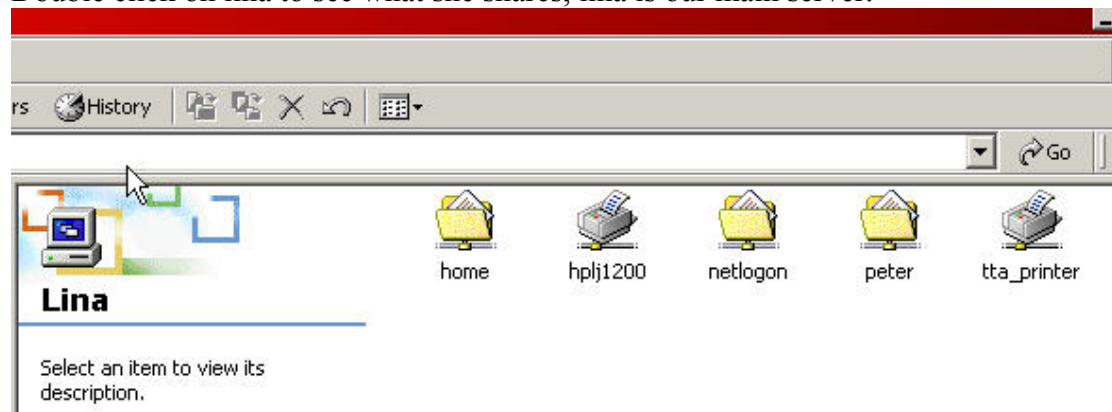
Type lina at Computer Name



Click search, after a while icon Lina will appear:



Double click on lina to see what she shares, lina is our main server.



In this particular case, I logged in as peter with pftp, I will see my home folder "peter", All users "home", Microsoft "netlogon" and two printers. This is only the start, you can map drives to the folders if you like. It is exactly as you were sitting at the server, working. It is also possible to printout at the laserprinters, normally there is three, "qms" the colorprinter is missing due to service. Try to double-click on your home folder, named by your username instead of peter. (In your folder you will find public_html, that is your web server root folder. Linked to www.yourdomain.se)